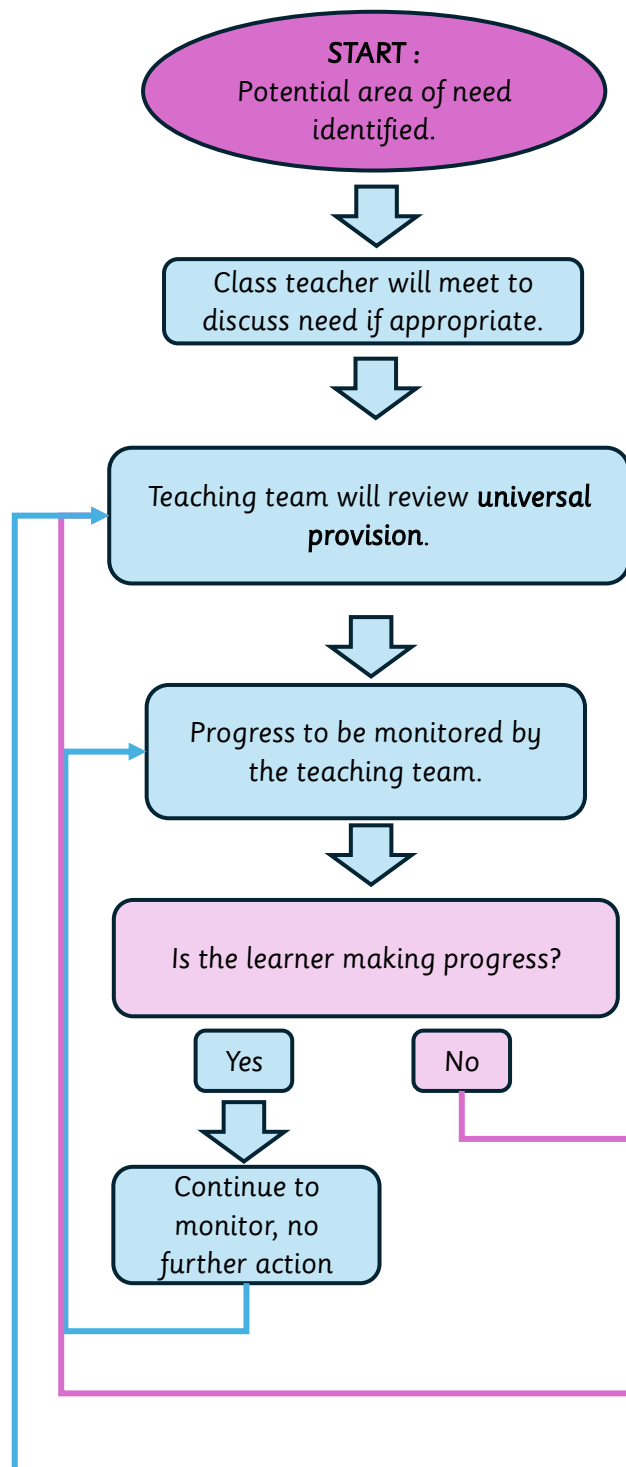


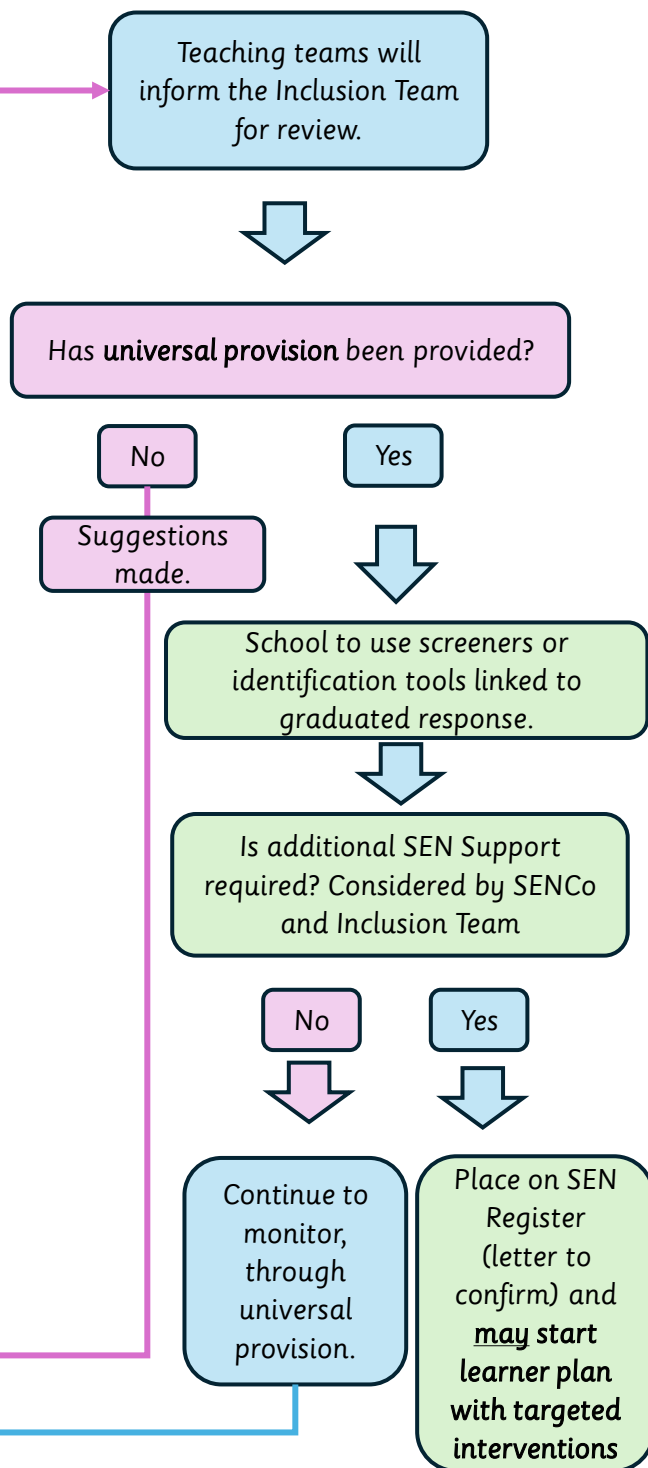
Identification and APDR

Identifying special educational needs early helps a learner get the right support at the right time. By noticing signs through observation, simple assessments, and working closely with families, academics can put support in place quickly, helping to prevent small challenges from becoming bigger barriers to learning. Provision should always be needs-driven rather than label or diagnosis-driven.

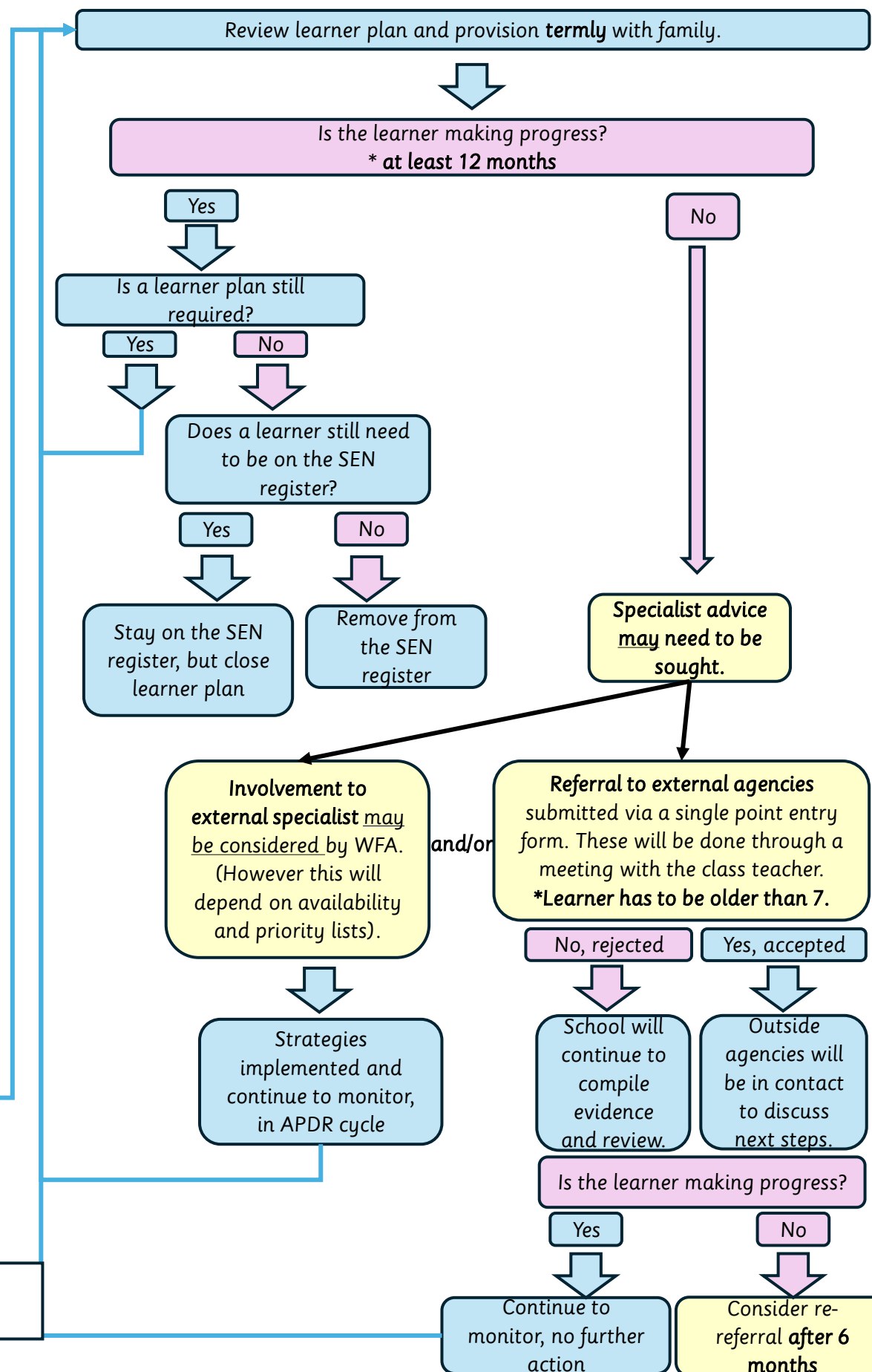
Stage One: Universal Provision



Stage Two: Targeted Intervention



Stage Three: Specialist Support



Wait times are subject to change depending on level of need and demand.